

Communities &
Environment
Policy &
Scrutiny
Committee
River Safety
29.6.16

Dave Meigh



Context

- Following a series of deaths from drowning during winter 2013/14 RoSPA were commissioned to review water side safety arrangements.
 - a. River Ouse – RSPCA / Water End to Millennium Bridge
 - b. River Foss – Blue Bridge to “iron bridge” over Huntington Road / Arran Place
 - c. Rawcliffe Lake, Centurion Lagoon, Clifton Backies Pond, Chapmans Pond and Rowntree Park Lake

Timeline

- April 14 - risk assessed and safety rated rivers, lakes and ponds
- June 14 – initial findings presented to River Safety Advisory Group
- Sept 14 – final report with detailed recommendations around two themes –
 - physical interventions and
 - education / awareness raising.
- Oct / Nov 14 - Release of new funding and work programme starts

RoSPA recommendations & actions

- CYC to state its safety standards
- Consistency
- Implement action plan to meet standards for
 - Lifebuoy provision
 - Reduce the likelihood of people getting in the water
 - Assisting self rescue / to be rescued
 - Minor works to achieve above
 - Inspection and future maintenance

York safety standards

- Lifebuoys will be provided at regular intervals, be located near light columns, be accessible from the river e.g. adjacent to steps and take account of flood conditions.
- River bank edges will be defined by at least one of the following-
 - Natural vegetation or hedges
 - Fencing or bollards and chains
 - Changes in surface texture, curbs or paint.
- Where the riverbank has a smooth vertical wall or side, and no fencing is present, grab chains will be provided
- Where there is a build up of silt or debris this will be removed annually.

Actions 1, 2 & 4 Lifebuoys (old)



Actions 1,2 & 4 Lifebuoys (new)



Action 3 Inspection regime (old)

WATER
SURREY
SURREY SCENE

WEEKLY REPORT OF LIFE SAVERS EQUIPMENT

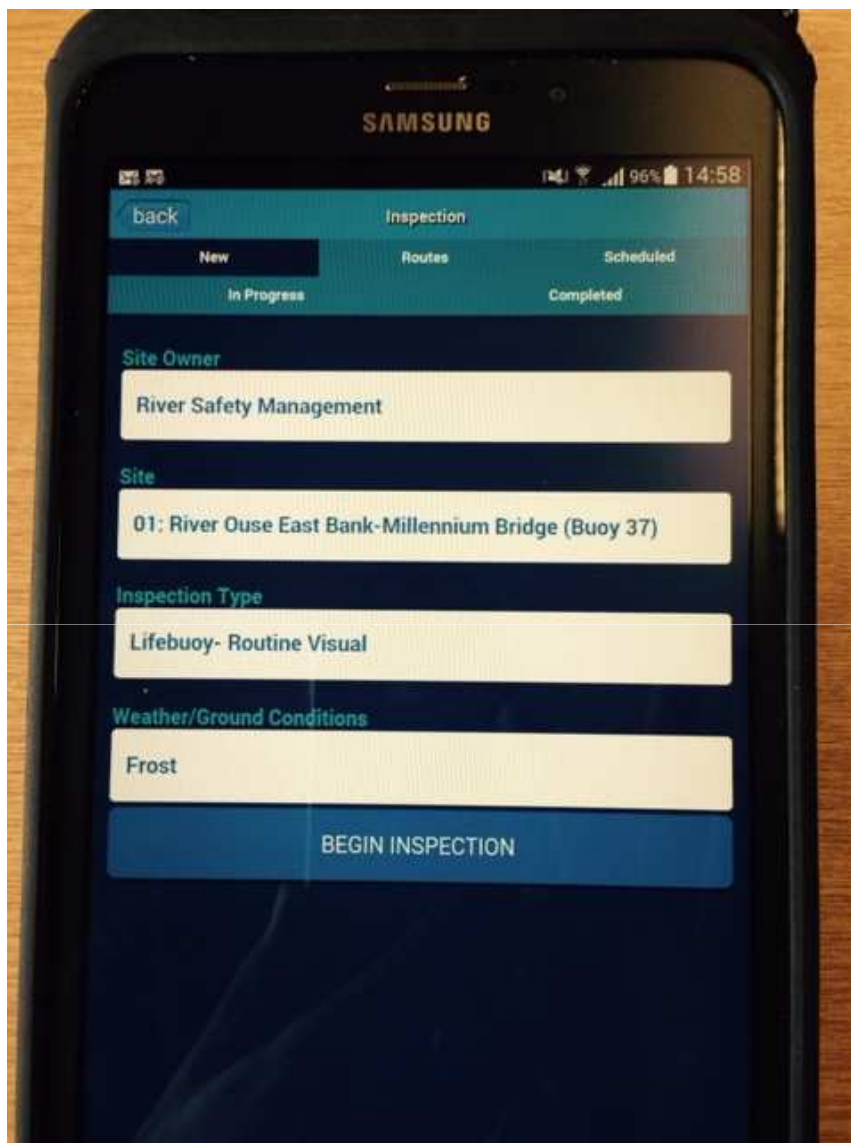
18/12/14 12/9/2014

NO	TYPE	LOCATION	DATE RE-INSPECTED	REMARKS	STATUS
1	Case	Blue Hill, Liphook station			X
2	Case	Blue Hill, Liphook station			X
3	Case	Blue Hill, Liphook station			X
4	Case	Blue Hill, Liphook station			X
4A	Case	Blue Hill, Liphook station			X
	Case	Blue Hill, Liphook station			X
6	Case	Blue Hill, Liphook station			X
7	Case	Blue Hill, Liphook station			X
8	Case	Blue Hill, Liphook station			X
9	Case	Blue Hill, Liphook station			X
10	Case	Blue Hill, Liphook station			X
11	Case	Blue Hill, Liphook station			X
12	Case	Blue Hill, Liphook station			X
13	Case	Blue Hill, Liphook station			X
14	Case	Blue Hill, Liphook station			X
15	Case	Blue Hill, Liphook station			X
16	Case	Blue Hill, Liphook station			X
17	Case	Blue Hill, Liphook station			X
18	Case	Blue Hill, Liphook station			X
19	Case	Blue Hill, Liphook station			X
20	Case	Blue Hill, Liphook station			X
21	Case	Blue Hill, Liphook station			X
22	Case	Blue Hill, Liphook station			X
23	Case	Blue Hill, Liphook station			X
24	Case	Blue Hill, Liphook station			X
25	Case	Blue Hill, Liphook station			X
26	Case	Blue Hill, Liphook station			X
27	Case	Blue Hill, Liphook station			X
28	Case	Blue Hill, Liphook station			X
29	Case	Blue Hill, Liphook station			X
30	Case	Blue Hill, Liphook station			X
31	Case	Blue Hill, Liphook station			X
32	Case	Blue Hill, Liphook station			X
33	Case	Blue Hill, Liphook station			X

PLEASE REPORT ANY MISSING OR DAMAGED TANGERS DEEP WITHIN 30 MINUTES OF SWIMMING SIGNS

done
OAS 15/19



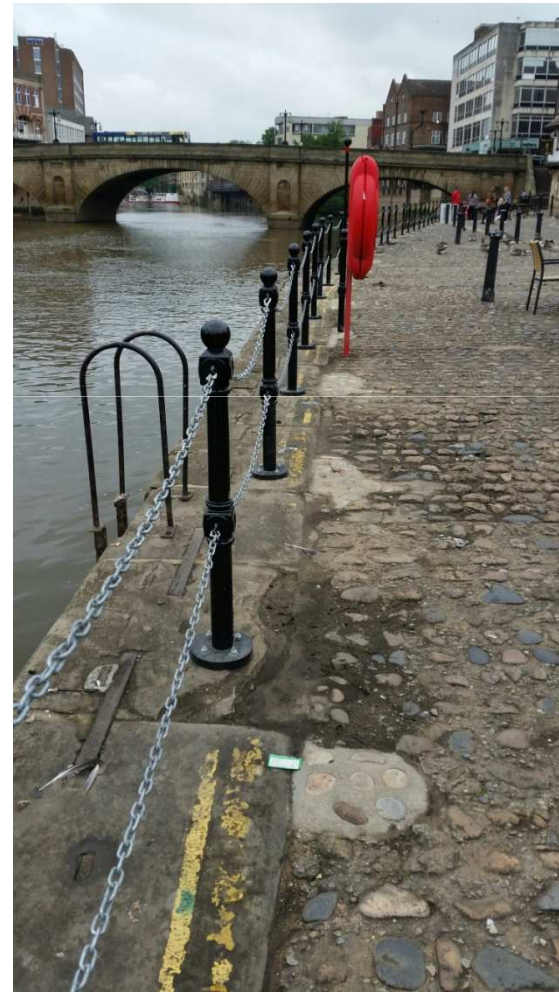
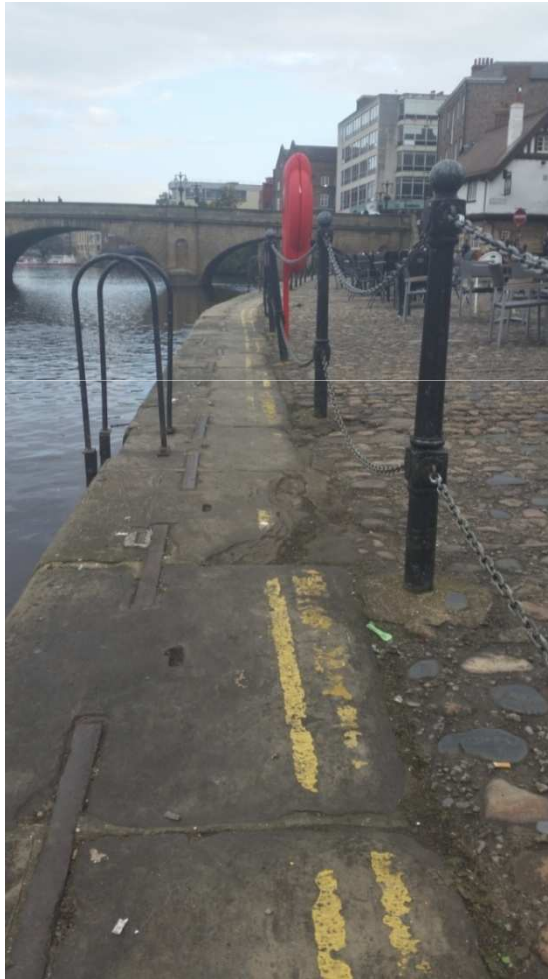


Action 3
inspection
regime
(new software
PSS live)

Actions 5 to 7 edge protection (new)



Actions 5 to 7 edge protection (old and new)



Actions 5 – 7 Edge protection (new)



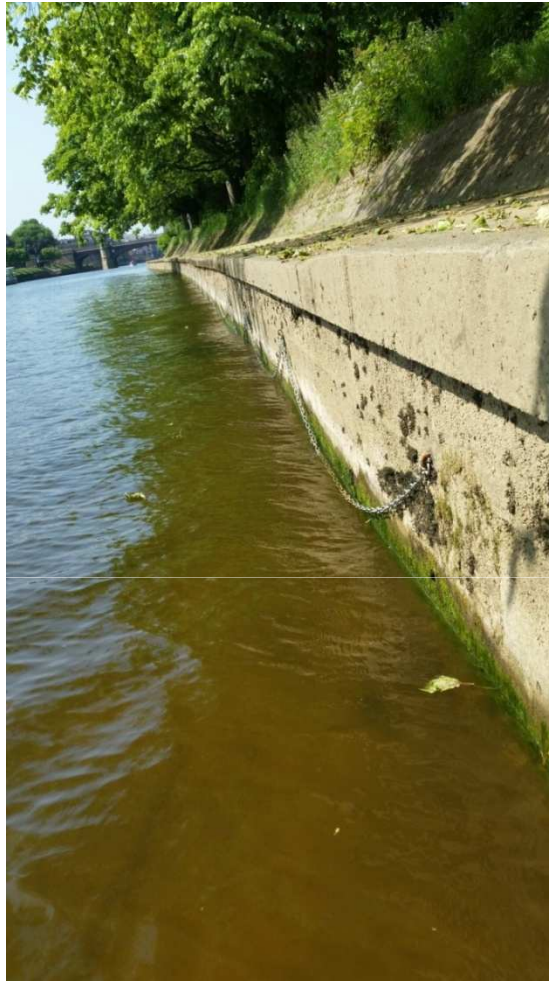
Actions 5 to 7 edge protection (increased)



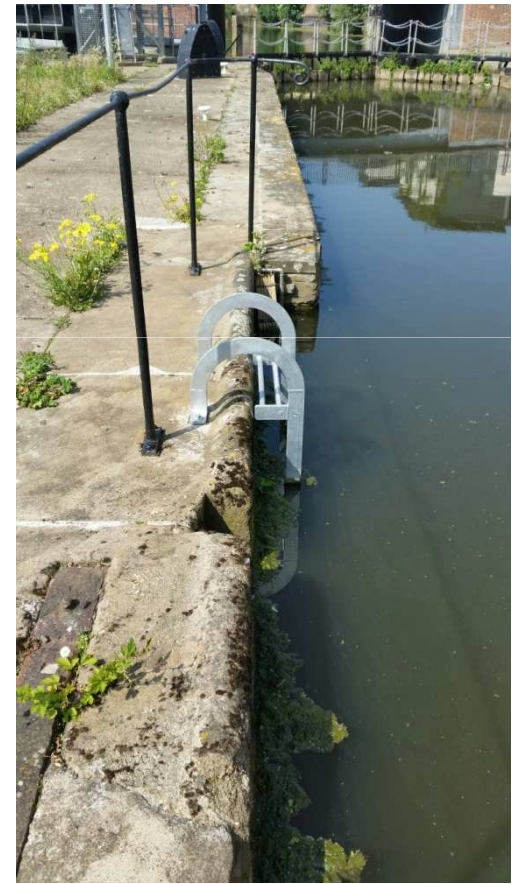
Actions 5 to 7 edge protection (increased)



Action 8 Grab chain (& depth audit)



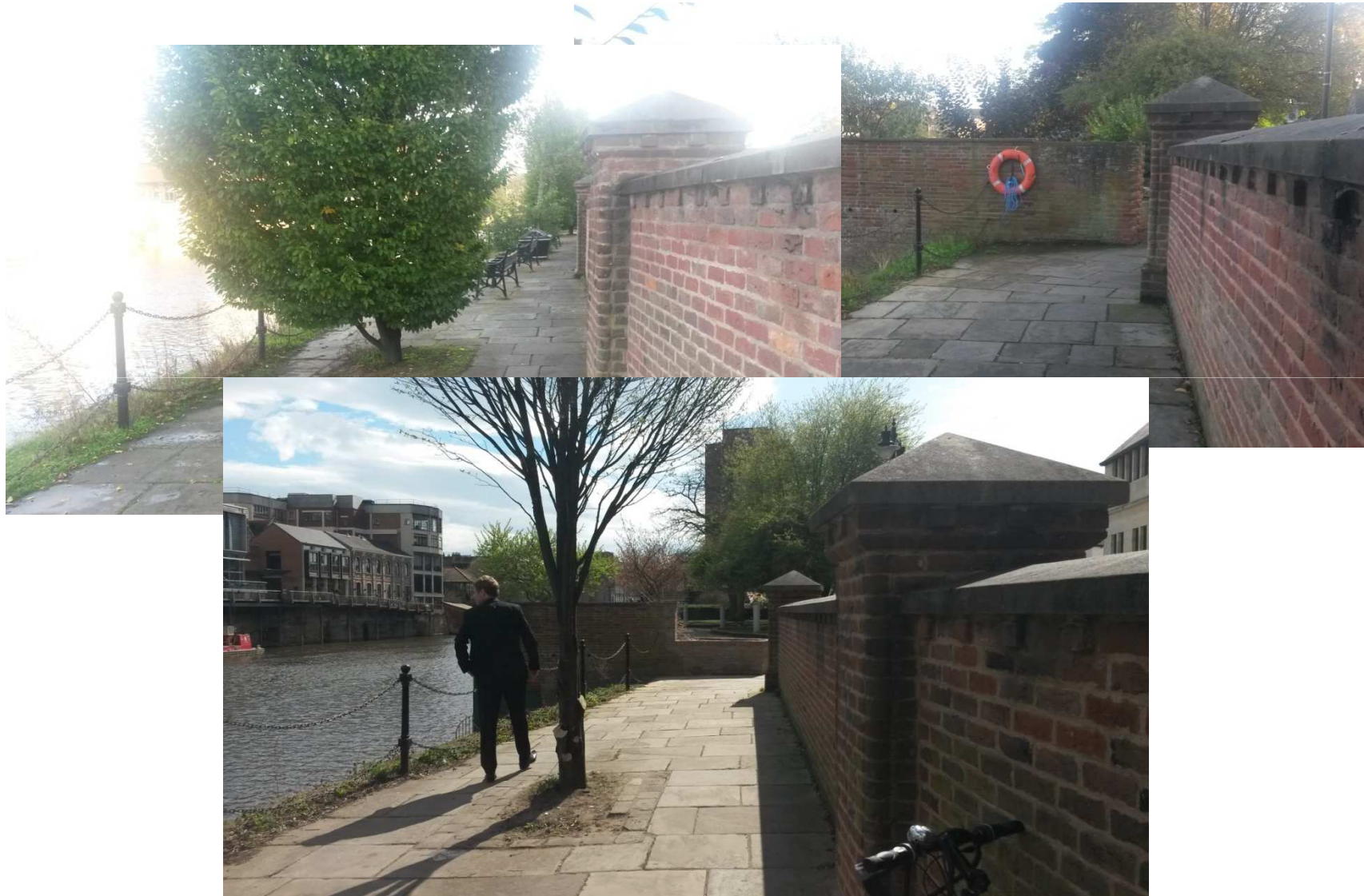
Action 8 Ladders



Action 9 (trip hazard)



Action 9 (sightlines)



Action 9 – (repairs)



Action 9

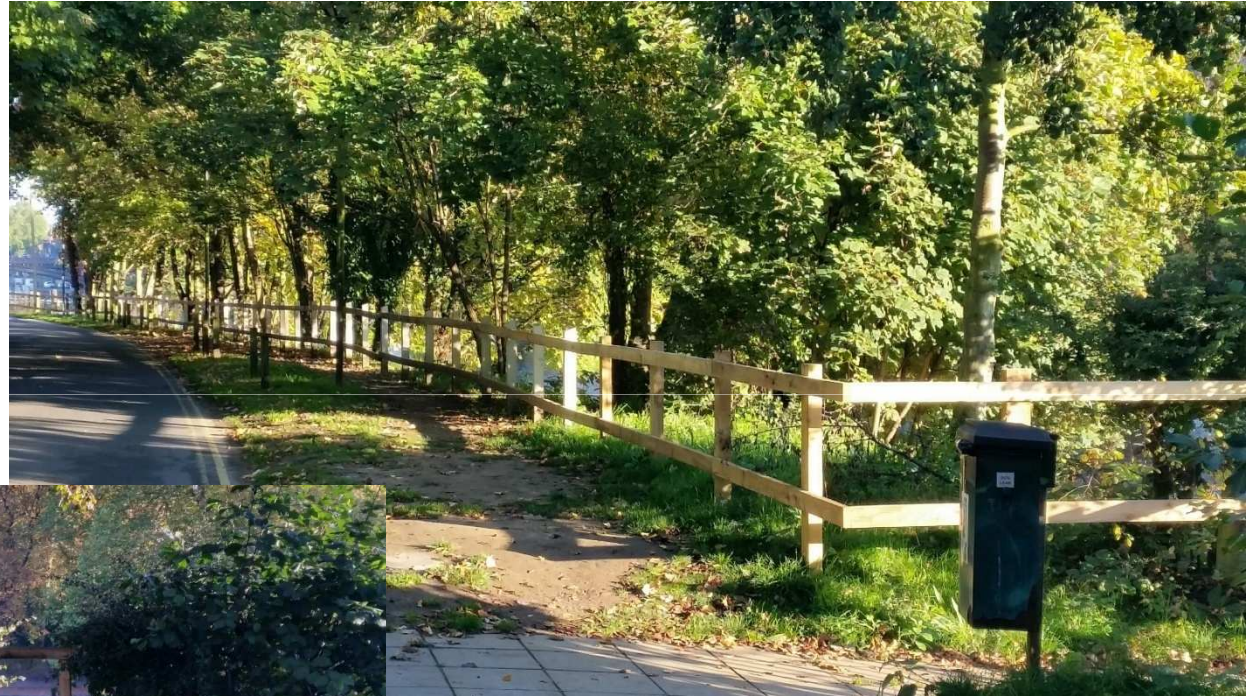
(refresh edge demarcation)



Action 9 (silt removal)



Action 9 new edge protection (following silt removal)



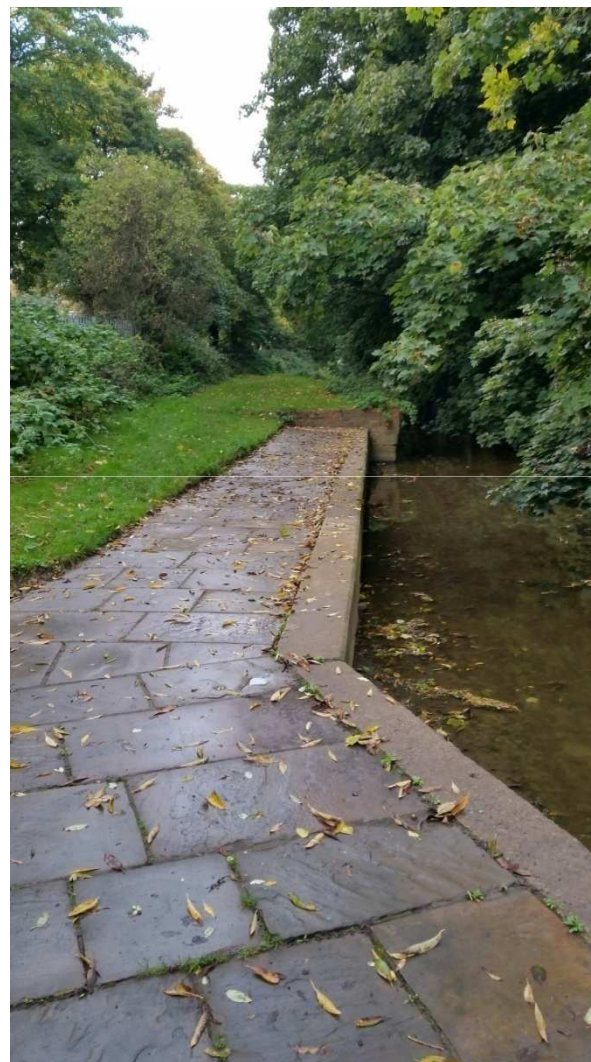
Action 9 (silt removal)



Action 9 (silt removal)



Action 9 (tidy up)



Action 9 (passive surveillance)



Action 11 Refresh slipway markings



Action 12 signage (old)



Action 12 signage (new)

CLIENT APPROVAL

ARTWORK PROOF

Client	City of York Council	Job No	NC5920	Signed	
File name		Designer		Print Name	
Date	13/08/2015	Page		Date	



10 (no) 210 x 300mm Aluminium Composite Material signs with riveted channels to rear



30 (no) 210 x 300mm Aluminium Composite Material signs with riveted channels to rear

Please check the artwork thoroughly, including any sizes, colours and spelling (including company contact details). We cannot be held responsible for any artwork errors once the job has been approved.

This drawing is the property of Signs Express and can only be used with our consent. Any unauthorised use of these designs will result in a £60 + VAT artwork charge. Whilst every effort is made to match your corporate colour scheme, if you are in any doubt about the colour matching please request to view our colour samples.

Artwork prepared by: Signs Express (York),

www.signsexpress.co.uk

SIGNS EXPRESS

Work in hand or planned

- Grab chains – Few additional short stretches for the River Ouse
- Post and chains refresh at Wellington Row
- Lifebuoys – five extra units to be installed
- Steps – 2 sets River Ouse Clifton area
- Published updated Safety Standards

Suggestions not being implemented

- Handrails to steps and ramps - navigation
- Protection from upper walk /cycleway e.g. Esplanade
- Grab chains where there are moorings or sports access is required e.g. Museum Gardens Esplanade
- Provision for significant flood events
- Emergency lighting under Ouse Bridge

Observations / comments / questions

